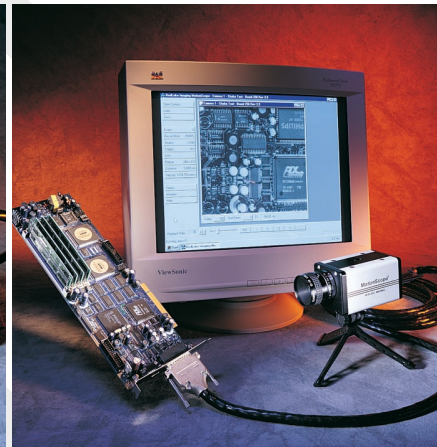
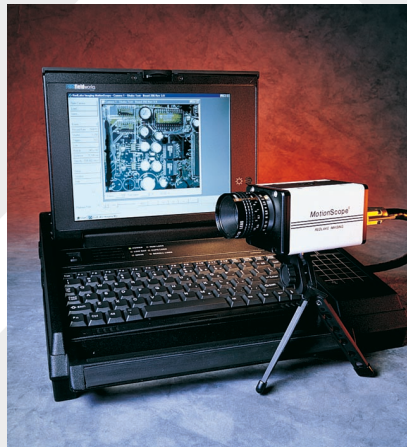


///MotionScope™

PCI Series

The Redlake MASD MotionScope PCI system has simplified image acquisition for motion analysis. Designed as a PC peripheral for capturing high-speed digital images directly in the PC, the MotionScope PCI system consists of a high-speed camera, full size PCI camera control and frame store board (onboard memory), installation and user interface software and documentation. System operation is easy with the "point & click" windows based application software. Record rates range from 60 through 8,000 frames per second, depending on the model.

MotionScope PCI cameras can be started or stopped remotely via a handheld switch or from an external trigger signal generated by an optical, acoustic, or electronic sensor (standard 5 Volt TTL signal, or up to 30 Volt DC signal). Once captured, the images of the event reside on the Redlake MASD MotionScope PCI board in the PC until transferred over the computer's PC bus for display and analysis. Playback rates include single, 1, 2, 3, 4, 5, 10, 15, 25, 30, 50, 60, 125, 250, 500, 1,000, 2,000, 4,000 and 8,000 frames per second, forward or reverse. Images are archived in the standard



S N A P S H O T

High-Speed Camera PC Peripheral

The MotionScope PCI series is a complete, easy-to-install system.

Easy Operation

"Point & Click" operation, learn to operate in minutes.

Flexible Trigger Options

Enables record and capture of controlled and intermittent events.

Images in the PC

Makes analysis of images easier, faster and more accurate.

Microsoft .AVI file format. Images can be converted to other image file formats.

Because application requirements vary widely, MotionScope PCI systems are available in several configurations. For customer convenience, Redlake MASD offers an accessory kit that contains all the equipment needed for most applications. A complete selection of lenses, lights, tripods, etc. to handle nearly any situation in nearly any industry is also available.



MotionScope™

PERFORMANCE SPECIFICATIONS

MotionScope PCI Series	PCI 1000 S, PCI 2000 S, PCI 8000 S, PCI 1000 SC and PCI 2000 SC
Image Resolution	Up to 480 x 420 x 8 bit pixels per frame depending on model
Recording Rates	60, 125, 250, 500, 1,000, 2,000, 4,000 and 8,000 frames per second depending on model
Shutter Speed	Electronic shutter operates at a factor of 1x to 20x of set recording rates. Ranges from 1/60th seconds to 10 microseconds depending upon frame rate and model
Recording Mode	
Manual	Begins recording when the record button is clicked. Continues to record and store images in memory until the stop button is clicked
Trigger	Begins recording when the record button is clicked. Continues to record and store images in memory until an external trigger signal is received. The adjustable trigger position (0% - 100%) determines how many frames are stored before and after the trigger signal is received (time zero)
Frame Storage	
Standard	Up to 16,384 frames, depending on model
Enhanced	Up to 32,768 frames, depending on model
Maximum	Up to 65,536 frames, depending on model
Playback Rates	Playback mode at 1, 2, 3, 4, 5, 10, 15, 25, 30, 50, 60, 125, 250, 500, 1,000, 2,000, 4,000 and 8,000 frames per second, forward and reverse. Single step mode, forward and reverse
Menu Display	Mode (Live, Record, Play), Frame #, Time of Frame (in ms), Camera #, Event #, F/Sec. Record, Shutter Speed, Trigger Point, F/Sec. Play, Reticle Distance, Velocity, Data, Load and Save files, Setup, and Help
Operator Environment	Point & click environment for Windows 2000 and Windows NT® 4.0 with Service Pack 4 and 5
Trigger Input	Standard TTL signal up to 30 Volts DC. BNC connector
Video Out	RS-170 (NTSC or PAL compatible) output to VCR or external monitor
Phase-Lock	Multiple PCI camera systems can be Phase-Locked to insure that frame zero is identical on each PCI camera system
Lens Mount	Standard C-mount
Power Requirement	+5V @ 2 Amps, + 12V @ .8 Amp per PCI Systems (20 Watts total)
Board size	Full size PCI board requires 2 slot spaces to accommodate memory
Camera Size	2.5" H x 2.5" W x 4" L (63.5 x 63.5 x 101.6mm)
Weight	1.5lbs (.7kg)
PC Minimum Platform	Minimum Pentium II with MMX technology, 1024 x 768 display resolution, 128MB DRAM, 3+GB Hard Drive, CD-ROM Drive, 2 or more PCI slots. CD-R, Zip or Jazz drive recommended



REDLAKE

Redlake MASD, Inc.

tel: 800.462.4307

tel: 858.481.8182

fax: 858.792.3179

email: sales@redlake.com

www.redlake.com



Note: Specifications are typical and subject to change. M105-02