

Airborne High Speed Camera



FEATURES

- High Frame Rates
- High Resolution
- High Light Sensitivity
- Ruggedized Construction
- Long Recording Times
- Light-weight Compact Design

APPLICATIONS

- Missile Launch
- Ballistics
- Projectile Tracking
- Component Tracking
- Vehicle Testing
- Materials Testing
- Flow Visualization

North America

1202 E PARK AVE
TALLAHASSEE, FL 32301
UNITED STATES
P: (+1) 850-222-5939
F: (+1) 850-222-4591

Web

www.idtvision.com

1 WEST MOUNTAIN STREET
SUITE 3
PASADENA,
CA 91103-3070
UNITED STATES
P: (+1) 626-794-4649
F: (+1) 626-794-4651

Europe

VIA PENNELLA, 94 I-38057
PERGINE VALSUGANA (TN)
ITALY
P: (+39) 0461-532112
F: (+39) 0461-532104

EKHOORNSTRAAT, 22
B-3920 - LOMMEL
BELGIUM
P: (+32) 11 551065
F: (+32) 11 554766

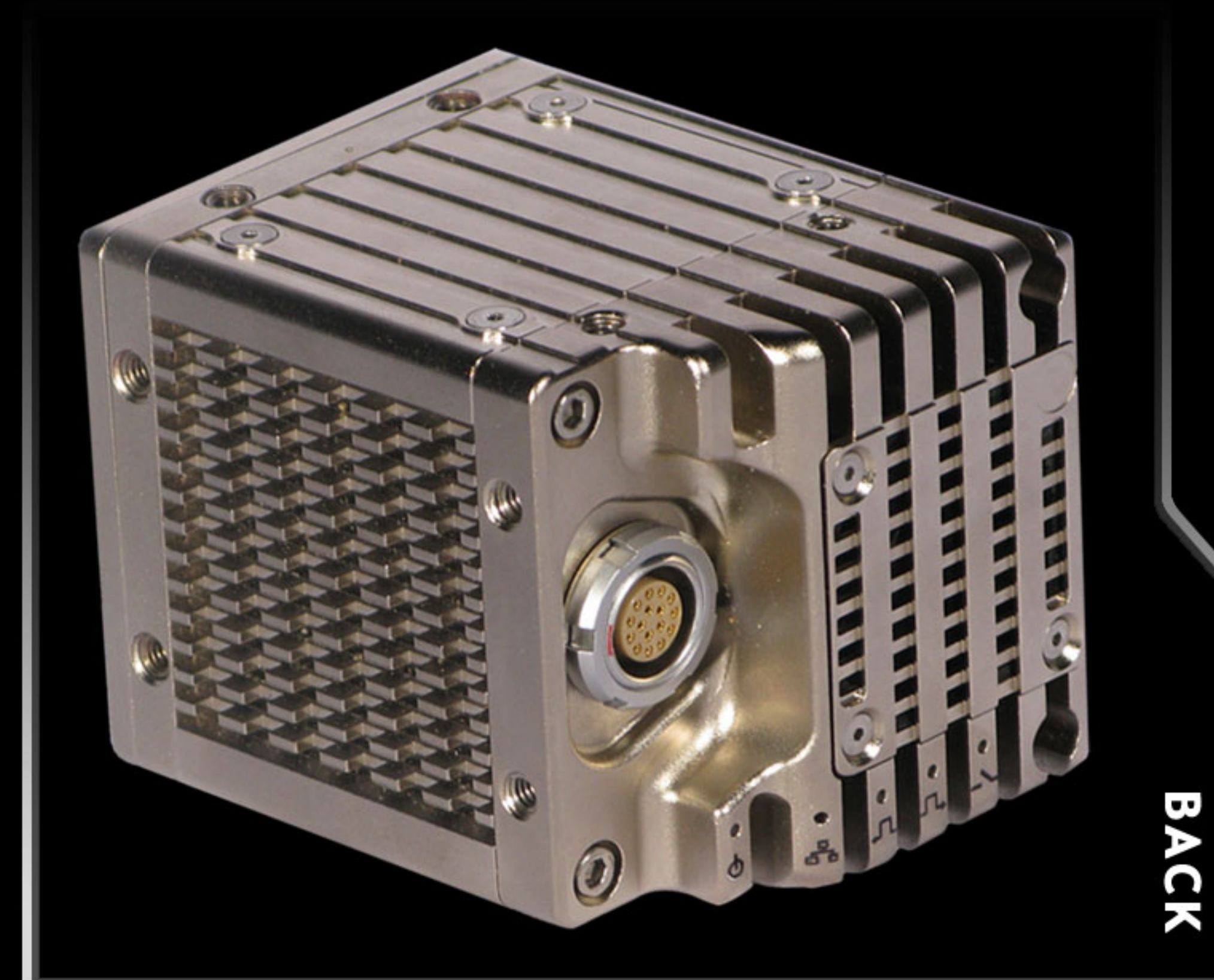
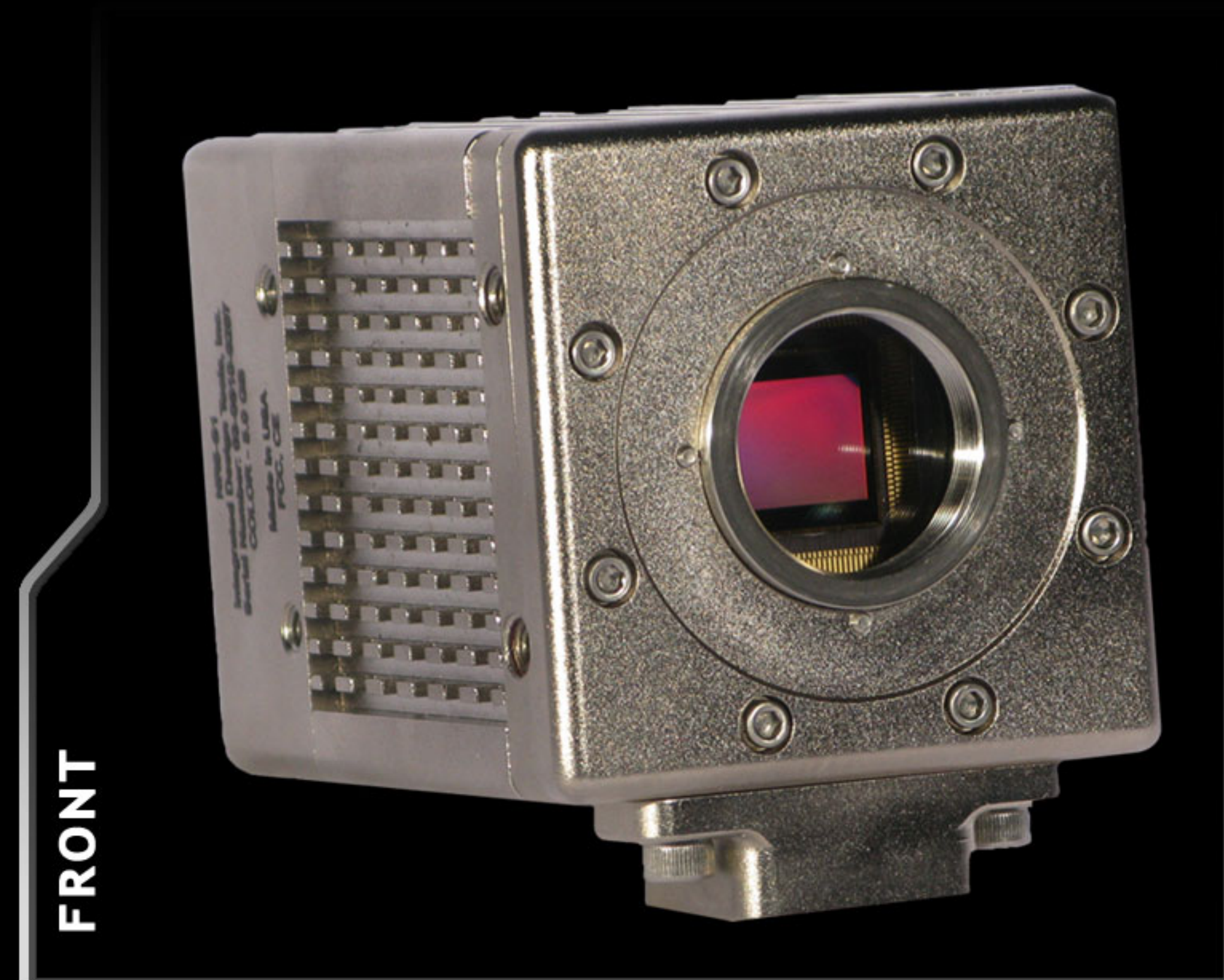
Asia

UNIT 6, 9F, 77, HUN HUA S. RD.
SECTION 2, TAIPEI
TAIWAN
P: (+886) 2 2706-2110
F: (+886) 2 2706-3837

Web

www.idt-japan.co.jp

6F SAKURAI BIDG.
2-8-19 FUKAGAWA, KOTO-KU,
TOKYO 135-0033
JAPAN
P: (+81) 3-5639-2773
F: (+81) 3-5639-2808



CAMERA SPECIFICATIONS	NR3	NR4	NR5
Sensor Resolution	1280 x 1024 pixels	1014 x 1024 pixels	2336 x 1728 pixels
Max. Image Size	1280 x 1024 pixels	1024 x 1024 pixels	2560 x 1920 pixels
Max Frame Rate (fps)	Option S1: 500 fps Option S2: 1,000 fps	Option S1: 1,000 fps Option S2: 2,000 fps Option S2: 3,000 fps	Option S1: 325 fps Option S2: 730 fps
Sensitivity ISO	3000 Mono / 1000 Color	6000 Mono / 2000 Color	3000 Mono / 1000 Color
Internal Memory	1.25 GB Standard 5.0 GB Optional	1.25 GB Standard 5.0 GB Optional	1.25 GB Standard 5.0 GB Optional
Imaging Features	Auto Exposure: frame-to-frame Global Shutter: minimum - 1 μ s Anti-Blooming Dynamic Range: 59 dB Signal-to-Noise Ratio (SNR): 54 dB Real-time Motion Trigger Spectral Response: 400 nm to 800 nm (Without IR Cut Filter)		
External Trigger	TTL and switch closure		
Trigger Options	Burst Trigger; Pre and Post Trigger; Delay Trigger Linear and Circular Buffering		
Time Stamp	Overlay IRIG time and frame number		
Image Data Formats	Camera Output: RAW Bayer or RGB System Management Filters: TIFF, AVI, MPEG, MPEG2, BMP		
Download Transfer	Via 100/1000BaseT		
Camera Configuration and Ctrl. Interface	Via 100/1000BaseT		
Enclosure Dimensions	64 x 64 x 67 mm (maximum dimensions)		
Package Enclosure Mass	Less than 500 grams		
Lens Mounting	C-Mount and optional F-Mount		
Environmental Specs	Operating Temperature: -40°C to +60°C Humidity: 5% to 95% RH, non-condensing Vibration: MIL-STD-810 Random; 15 g RMS from 20 to 2,000 Hz; 10 min. any axis Shock: MIL-STD-810 200 g, half-sine, 11ms, 6 shocks, any axis Acceleration: 25 g indefinite duration, any axis EMI/EMC per MIL Std-461		