



**Motion Studio**  
**What's new**  
**Version 2.16.07**

## Table of Contents

<b>1. OVERVIEW.....</b>	<b>3</b>
<b>2. WHAT'S NEW.....</b>	<b>4</b>
2.1. New models.....	4
2.2. Optimal jumbo datagram size.....	5
2.3. Advanced color chart calibration.....	6
2.4. Options export and import.....	8
2.5. Added time stamp option to open dialog list.....	9
2.6. Improved 'Go To' dialog.....	10
2.7. Configurable 8 bit addressing in CCM cameras.....	11
2.8. Added min and max values to auto-iris.....	12
2.9. Miscellaneous.....	13

Copyright © Integrated Design Tools, Inc.

The information in this manual is for information purposes only and is subject to change without notice. Integrated Design Tools, Inc. makes no warranty of any kind with regards to the information contained in this manual, including but not limited to implied warranties of merchantability and fitness for a particular purpose. Integrated Design Tools, Inc. shall not be liable for errors contained herein nor for incidental or consequential damages from the furnishing of this information. No part of this manual may be copied, reproduced, recorded, transmitted or translated without the express written permission of Integrated Design Tools, Inc.

# 1. Overview

This document only lists a short summary of additions, improvements and changes in the GUI between Motion Studio versions.

## 2. What's new

### 2.1. New models

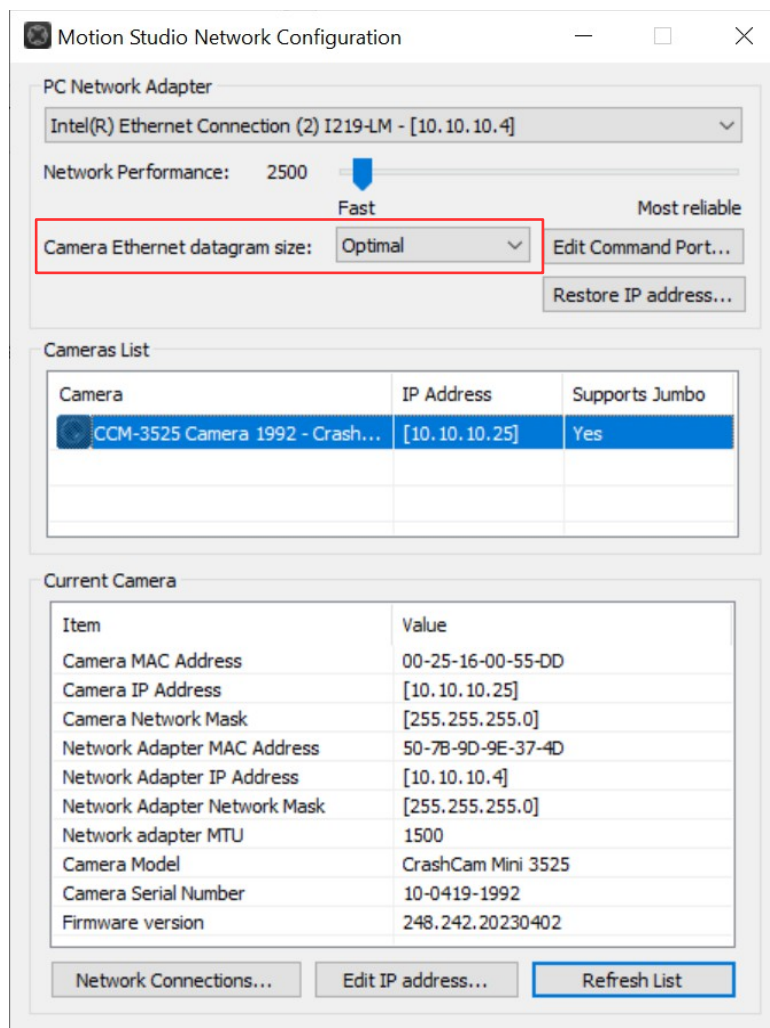
Added support for the following camera models:

- **XS-II Phoenix 5K Plus** (5184x2448 @ 540 fps).
- **XS-II Phoenix 6K Plus** (6400x5120 @ 1000 fps).

## 2.2. Optimal jumbo datagram size

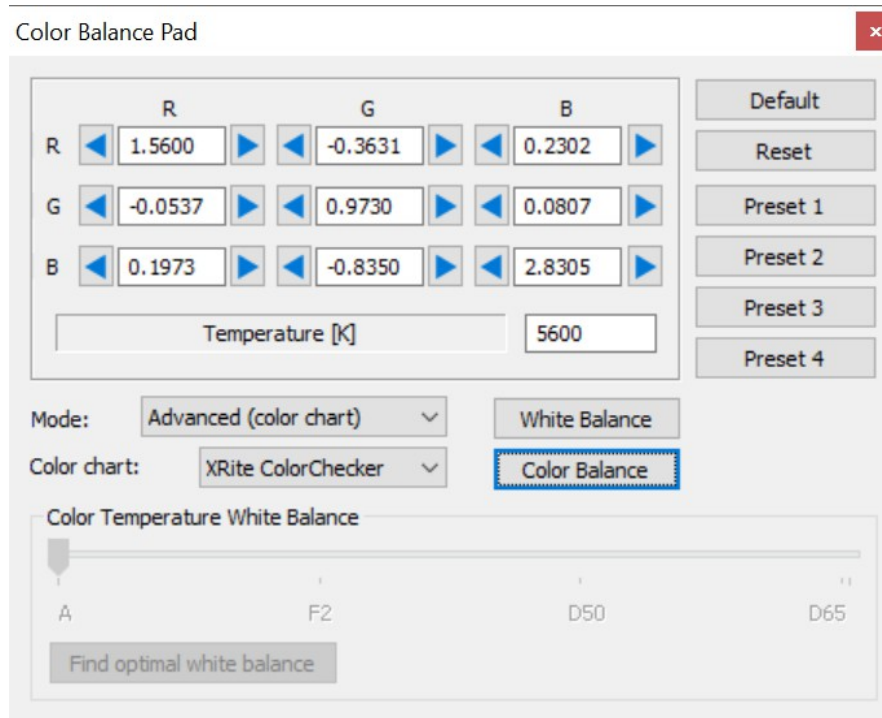
Datagram size can be configured in GE Cameras Configuration Utility. A new option has been added to allow different jumbo configurations if cameras are connected to different Ethernet Adapters (**optimal**).

In optimal mode, Motion Studio reads the datagram size of each network adapter connected to cameras and sets corresponding camera's datagram size to the closest value.



## 2.3. Advanced color chart calibration

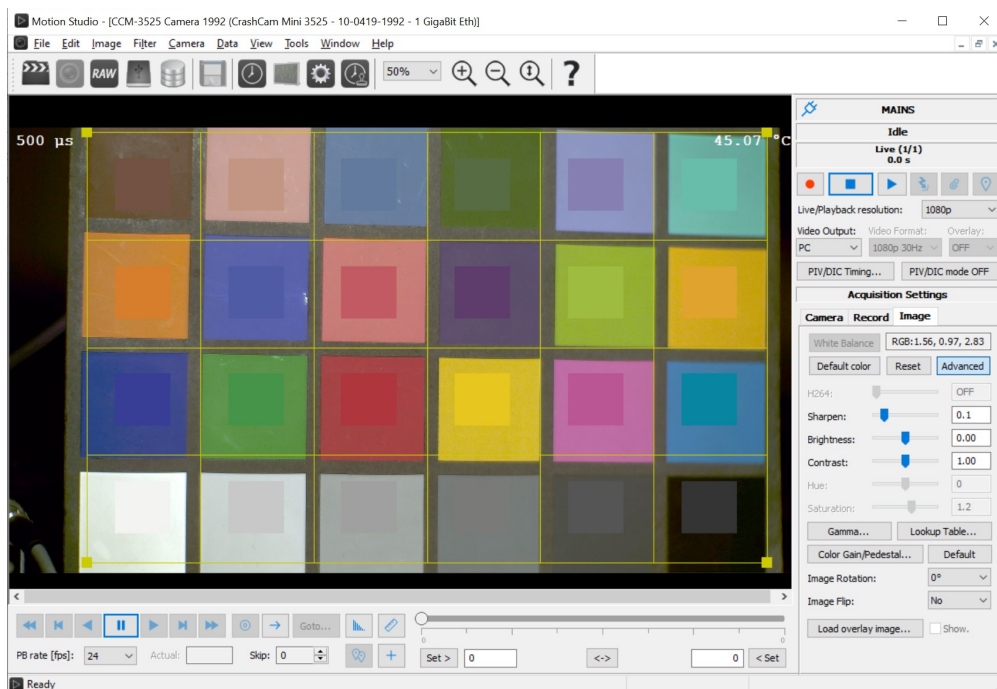
Color balance procedure has been improved. A new calibration algorithm, that includes 24 targets from most common color charts, has been added to Motion Studio.



**Mode:** select advanced (with 24 points color chart) or standard (with 5 points).

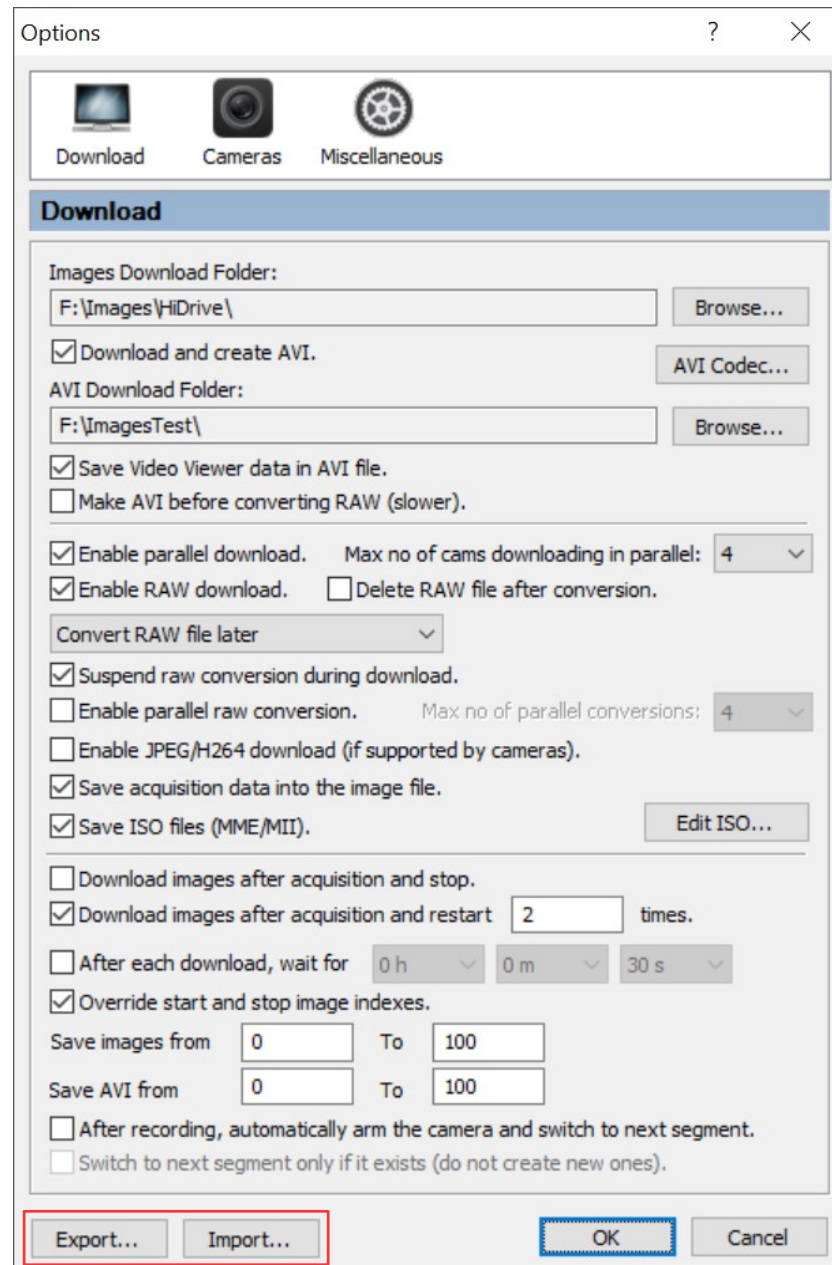
**Color chart:** if advanced mode is selected, select “X-Rite Color checker” (horizontal chart) or “Spyder Checkr” (vertical color chart).

If advanced mode is selected, a 24 rectangle grid is activated. Drag the grid so that the color rectangles match the chart in live image, and then click “Color balance” (see below).



## 2.4. Options export and import

Motion Studio general options can be exported to an XML file and imported from a file previously saved.



**Export:** saves Motion Studio current options to an XML file.

**Import:** reads options from an XML file and loads them to Motion Studio.



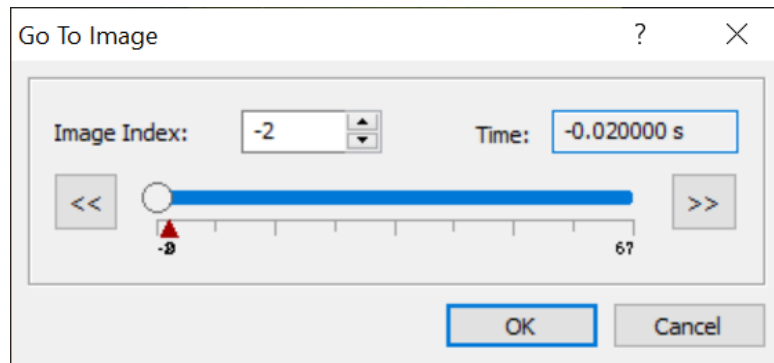
## 2.5. Added time stamp option to open dialog list

A new item has been added to welcome dialog box: the time stamp configuration.



## 2.6. Improved 'Go To' dialog

The “Go To Image” dialog box let the user jump to any frame inside a recorded sequence. The interface has been improved.



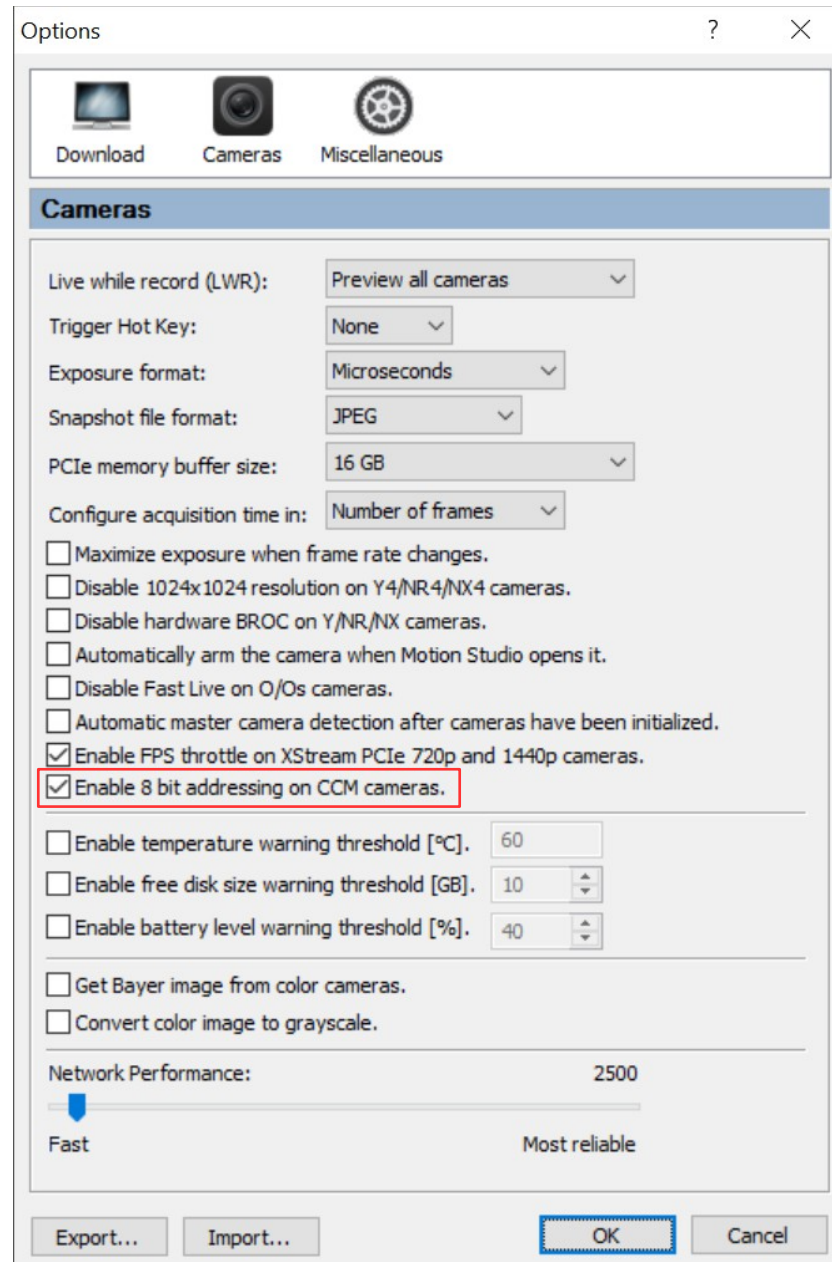
To select a frame, you may:

- Type the frame index.
- Move the slider.
- Click the << button to move to the first frame.
- Click the >> button to move to the end frame.

The corresponding frame time in the sequence is displayed.

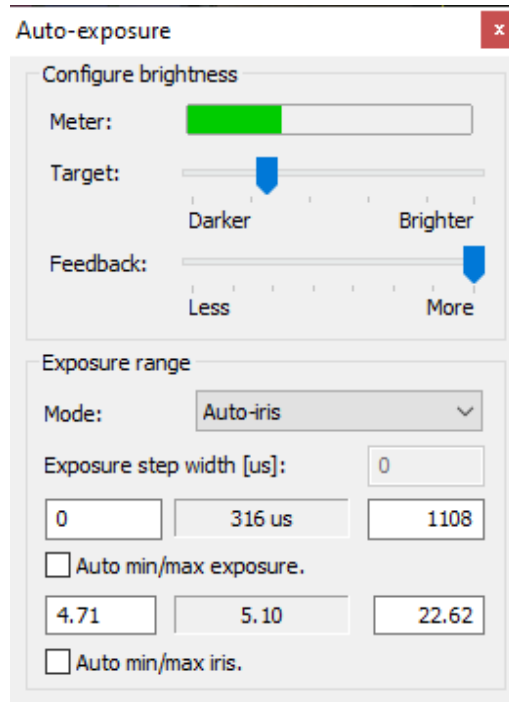
## 2.7. Configurable 8 bit addressing in CCM cameras

CCM cameras with latest firmware have configurable addressing (8 or 10 bit). To make those cameras compatible with previous 10 bit firmware, 8 bit addressing can be disabled.



## 2.8. Added min and max values to auto-iris

If Auto-Iris mode is selected, limits for iris can be set.



**Auto min/max iris:** if this option is selected, limits are taken from current lens minimum and maximum aperture.

## 2.9. Miscellaneous

- Improved exposure precision on cameras with short exposure option.
- Show elapsed time in playback bar tool-tip.
- Fixed distance calculation when live and playback resolution is not set to "Full".
- Multi-raw file view: allow adding new file to current list.
- Open raw file: when a parameter changes and raw file is closed, ask to save file (fixed).
- Raw file: if original pixel depth is above 8/24 bit, the user can edit pixel depth when a raw file is played back.
- Added support to read YUV422 files (non IDT raw).
- Fixed support to Motion Monitor clip files.
- When W2D is enabled, disable record mode configuration and set it to circular.
- Fixed management of Administrator setup.
- Print software version dynamically on splash screen image.
- Reworked DB viewer. Removed display of DAS files and tracking.
- Fixed sort of cameras and raw files in open dialog. Fixed sort by name and camera model.
- Fixed crash when 8 bit bitmap is displayed in Motion Studio.